



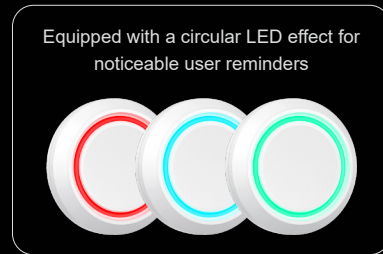
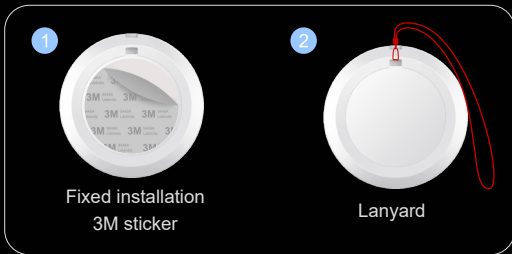
MOKO SMART

Safety in a Click

B3 Emergency Button

Introducing the B3 Emergency Button, a cutting-edge device powered by Bluetooth Low Energy technology. Featuring a prominent and easily accessible button with support for trigger functions, this device is equipped with a circular LED effect to provide noticeable user reminders. Primarily designed as a panic button, the B3 finds extensive applications in diverse settings, including elderly care, educational institutions, and vehicle scenarios. Experience enhanced safety and rapid response capabilities with the B3 Emergency Button.

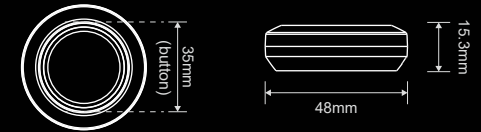
Multiple Wearing Methods



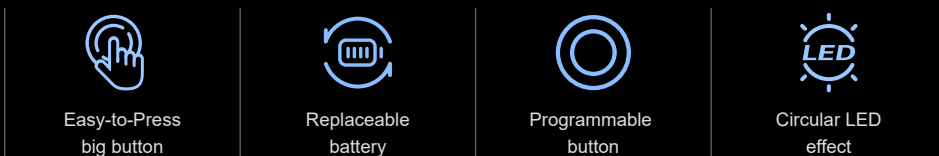
General specs

Connectivity:	BLE 5.0
Dimensions:	Φ48.0*15.3mm (Body) Φ35mm (Button)
Weight:	20g
Color:	White
LED:	Circular LED - Red/Green/Blue
Material:	PC
Battery capacity:	600mAh replaceable battery
Battery lifespan:	3.5 years ^① in default settings
Operating temperature:	-20°C to 60°C

Transmission range:	150m (in open area without obstacles)
Installation:	3M Sticker, Lanyard
Certification:	FCC CE RoHS REACH



Key point



Vehicle



School

^①Default settings: Adv interval = 1000ms, Standby duration = 0, Tx Power = 0dBm, without accelerometer sensor